



WELCOME TO THE

Masonic Village at Elizabethtown

The Masonic Village
at Elizabethtown is
open to **all**
individuals age 60
and over seeking
an active lifestyle.





CAREFREE
RETIREMENT
LIVING



PET FRIENDLY


A NOT-FOR-
PROFIT
ACTIVE
ADULT
COMMUNITY



FREEDOM TO
TRAVEL



Why consider Masonic Village at
Elizabethtown as your new home?



Since its inception in 1910, the Masonic Village at Elizabethtown has been committed to providing superior care to all who reside in our warm, friendly community.

1,400 Acres

1,900 Residents

1,500 Employees

**Open to Serve.
Open to Care.
Open to All.**

Retirement Living (RTL) - 1,109

Personal Care (PC) – 135

Skilled Nursing (SN) – 353

- 114 Memory Support**
- 18 Short-term Rehab (TCU)**



Retire Younger

Health Care

Financial Viability



The downsides of a deed

Little or no control of
future healthcare options

Little or no control of neighborhood

No built-in buyer

No “home-for-life” guarantee

Potential major maintenance
challenges

Responsible for real-estate taxes

Potential for assessments





**WHAT ARE
MY OPTIONS?**

Entrance Fee Accommodations



James Buchanan



Sycamore



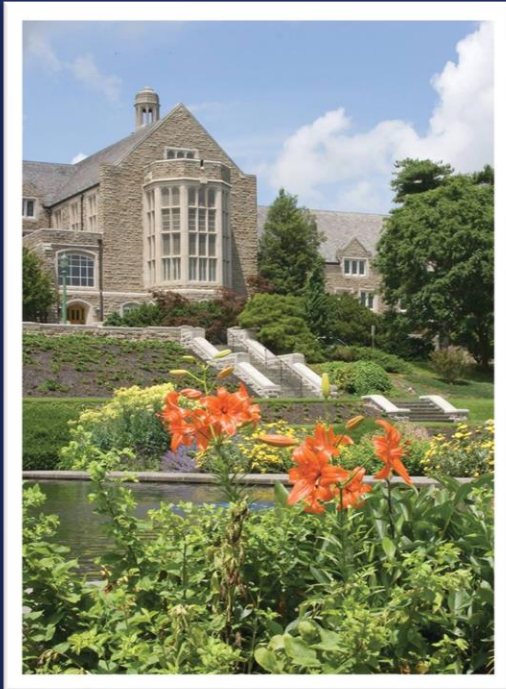
Cottages

Townhomes

Compass

Range from comfy one-bedroom apartments to ample two-bedroom cottages with a den/basement.

Rental Accommodations



Village Green



Free Standing Rentals

Range from cozy studios to spacious two-bedroom apartments.



Services included in the monthly service fee:

Flexible dining plan

Twice monthly housekeeping

Maintenance of furnished appliances

Maintenance and repairs

Heating/air conditioning

Water, sewer and electric

Property taxes/insurance

Passive Check In System

Smart Home Technology

Trash removal

Snow removal

24 Hr. Security/Nurse Response

Housekeeping of common areas

Grounds maintenance

Scheduled transportation

Use of campus amenities

Recreational/Social/Volunteer options

Village Connect Portal App

Each Accommodation Includes:

Unique Floorplans

Wall-to-wall carpeting

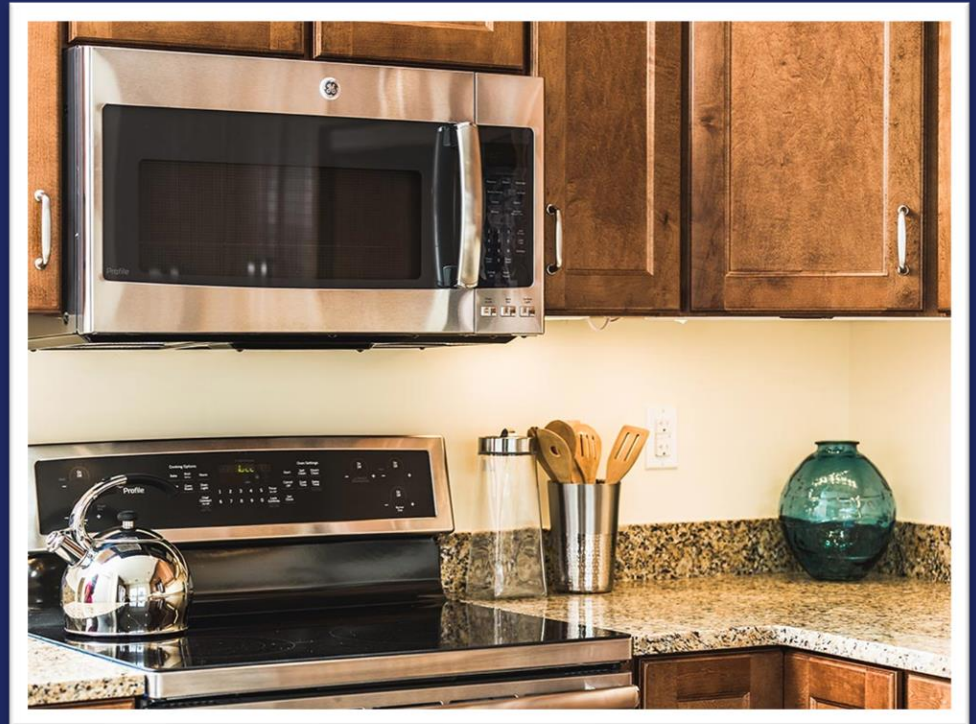
Window treatments

**Kitchen appliances (range,
refrigerator, microwave)**

Washer and dryer access

Emergency call system

**Individually-controlled heating and
air conditioning**



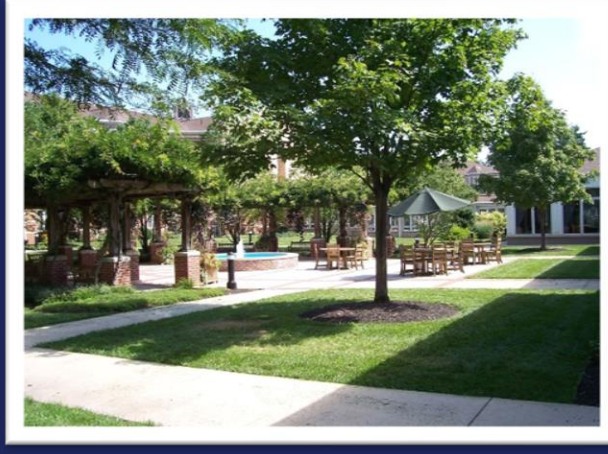


Monthly Service Fees



**SERVICES &
AMENITIES**

Activity Hubs



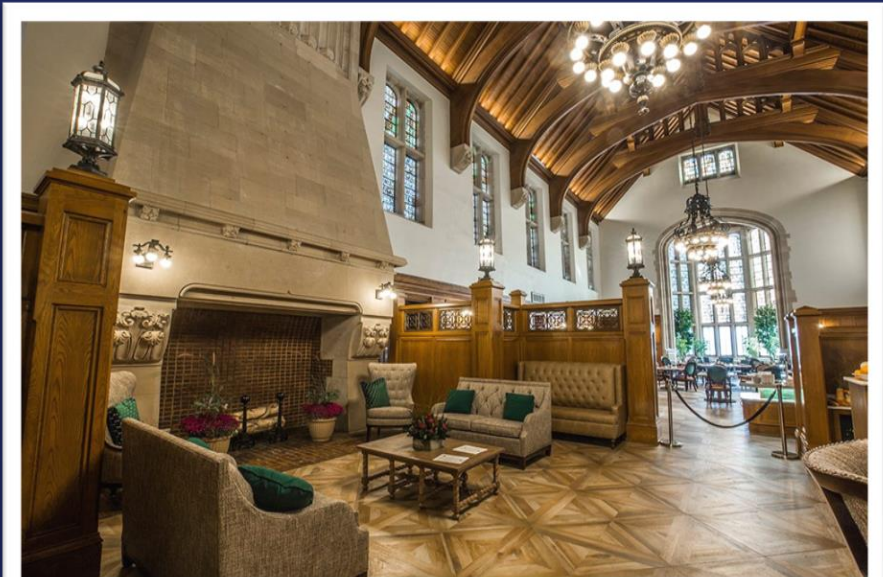
Visitor's Center

Grand Lodge Hall

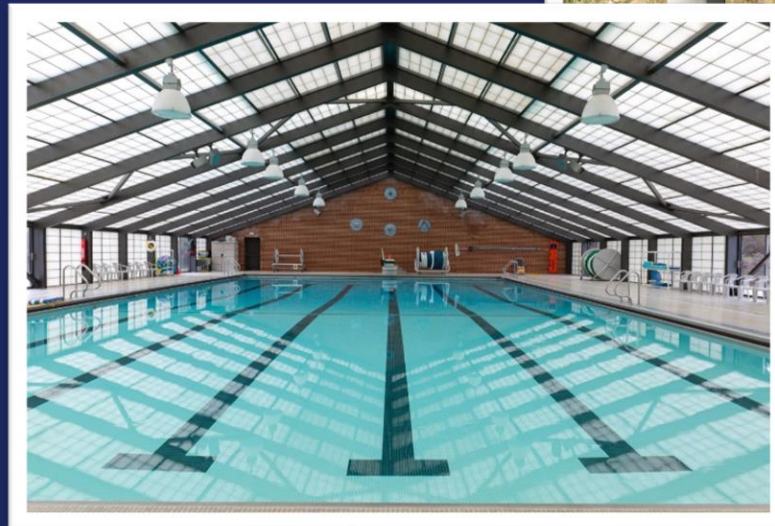
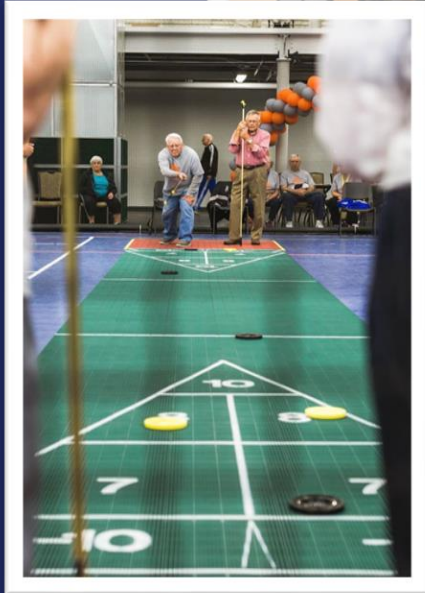
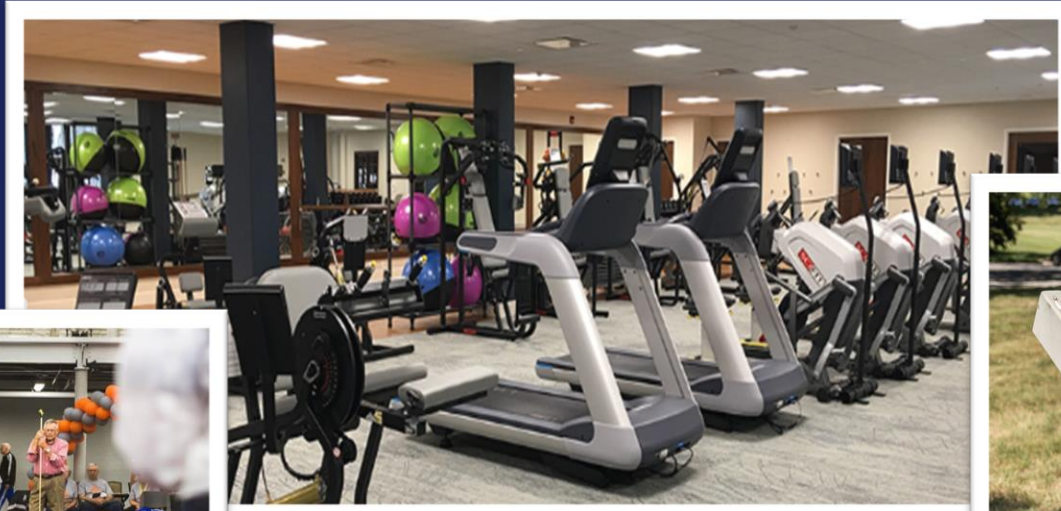
Clubhouse



Restaurants



Fun & Fitness



Hobbies & Clubs



On-the-Go

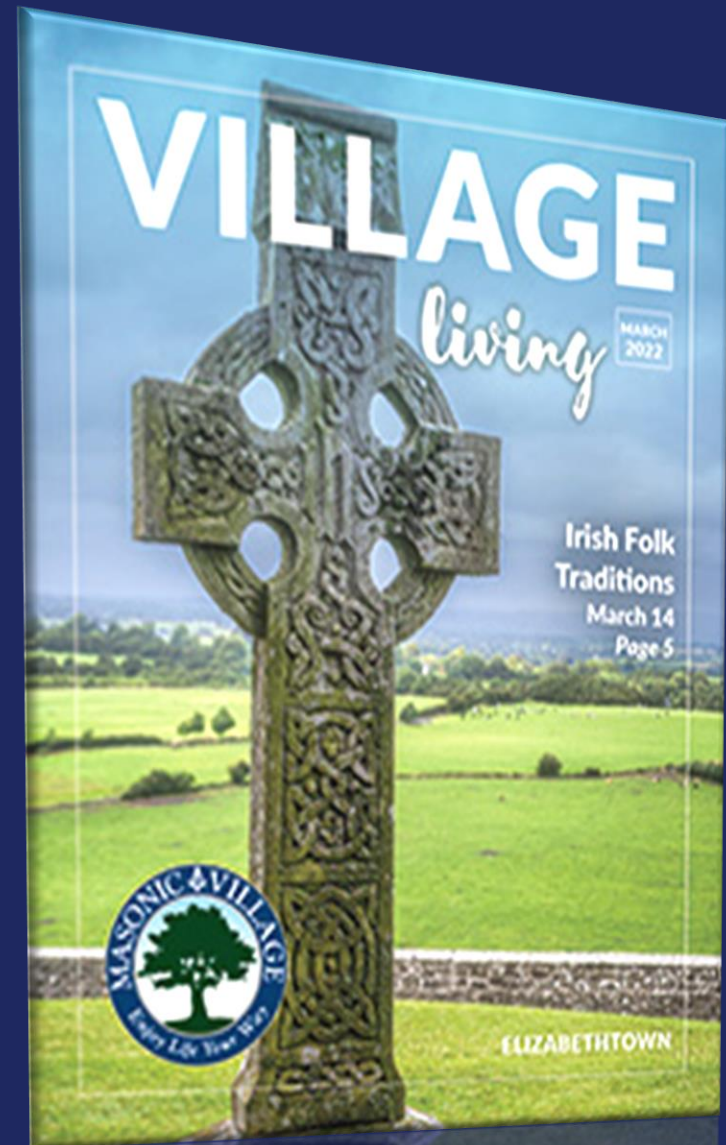
Trips

Shows

Entertainment

Excursions

Classes



On-Site Medical Services

Home Care/Home Health/Hospice

Physician/Clinics Offices

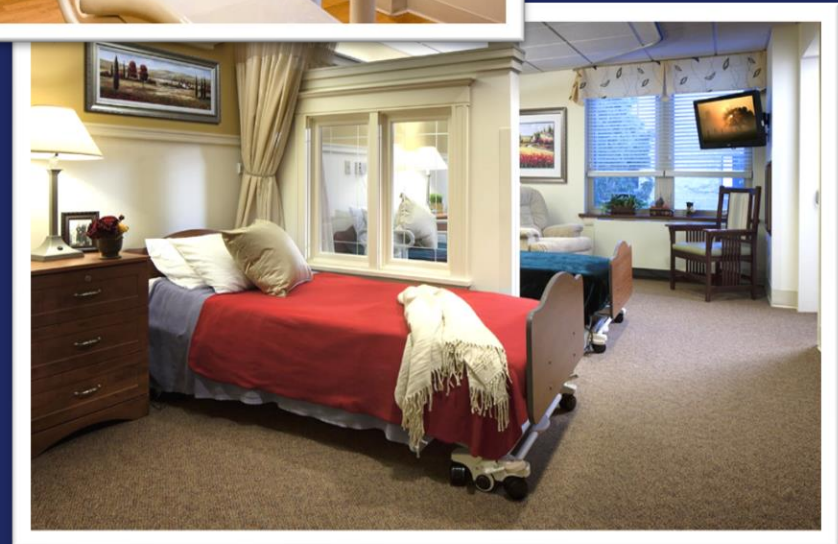
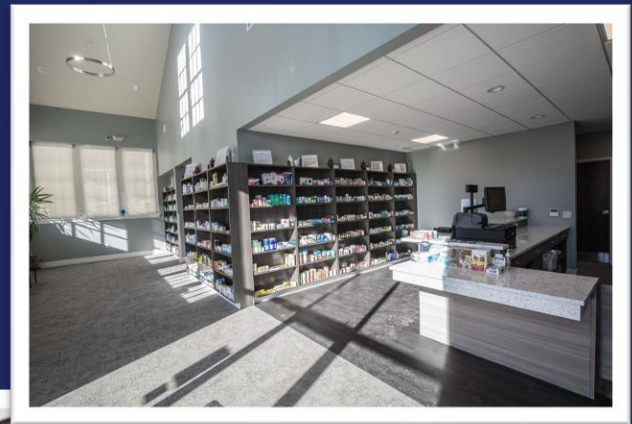
Pharmacy

Short-term Rehab (TCU)

Personal Care

Nursing Care/Memory Support

Palliative



A Great Location

Conveniently close to Harrisburg,
Lancaster, Hershey & York

Amtrak station

Harrisburg International Airport

Close to the action, far from the crowd!





Retirement Living at its best

Stay living independent (longer)

Age securely in a place you call home

Gain a level of cost certainty for health care

Focus on health, wellness and events

Provide a plan for coverage for future long term needs

Minimize the caregiver responsibility on your spouse and family members



The Next Steps...

Do the Math

Personal Visit

Priority List



Personal Visit









MASONIC VILLAGE
One Masonic Drive
R.W. Grand Lodge F. & A.M. of Pa.



310 Eden View Rd.
Farm Market

Fruit, Vegetables, Cider,
Jams and Fruit Butters







I'm a Seenager

I have everything that I wanted as a teenager
only 60 years later.

I don't have to go to school or work.

I get an allowance every month.

I have my own pad.

I don't have a curfew

I have a driver's license and my own car.

And I don't have acne

- **Al Vaughan** *Masonic Village Resident*

A scenic landscape featuring a paved road with a yellow center line and a white edge line, curving to the right. The road is lined with tall trees displaying vibrant autumn foliage in shades of yellow and orange. To the left of the road, a green field contains several cows grazing. In the background, a line of trees with autumn foliage is visible under a blue sky with wispy white clouds. A dark blue semi-transparent rectangular box is overlaid on the center of the image, containing the word "Questions?" in white text.

Questions?